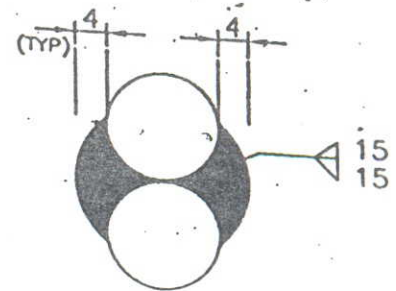
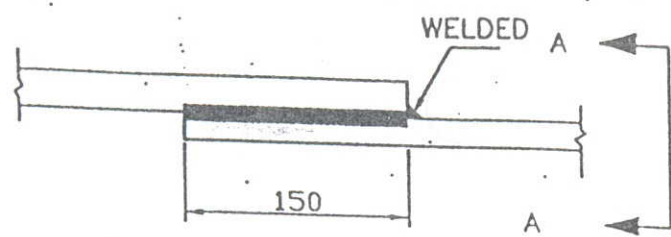


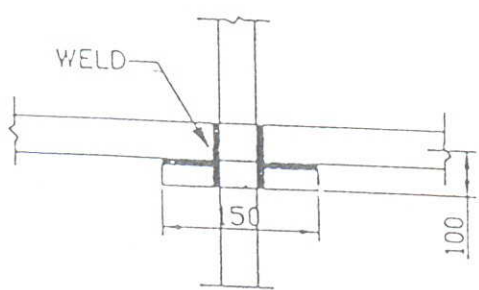
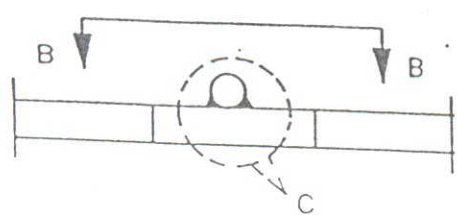
• ROD TO ROD

1. STRAIGHT LAP JOINT/RISER

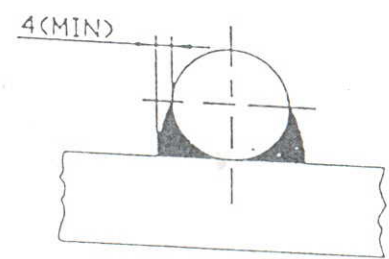


VIEW A-A

2. RIGHT ANGLED JOINT

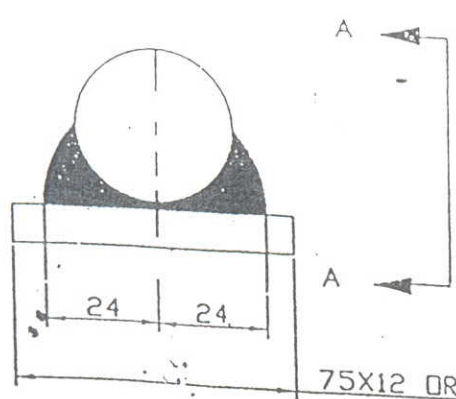


VIEW B-B

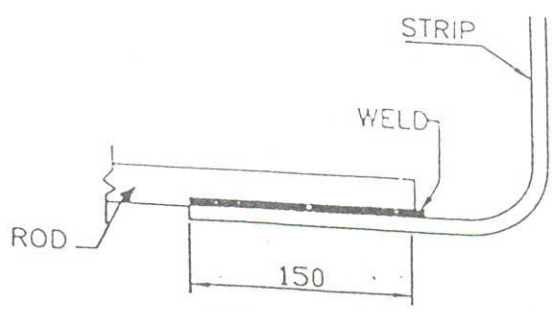


VIEW C

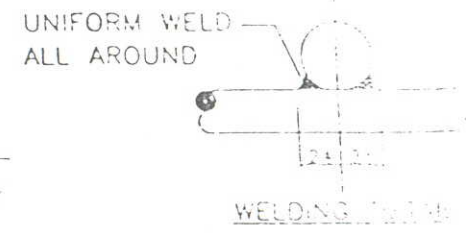
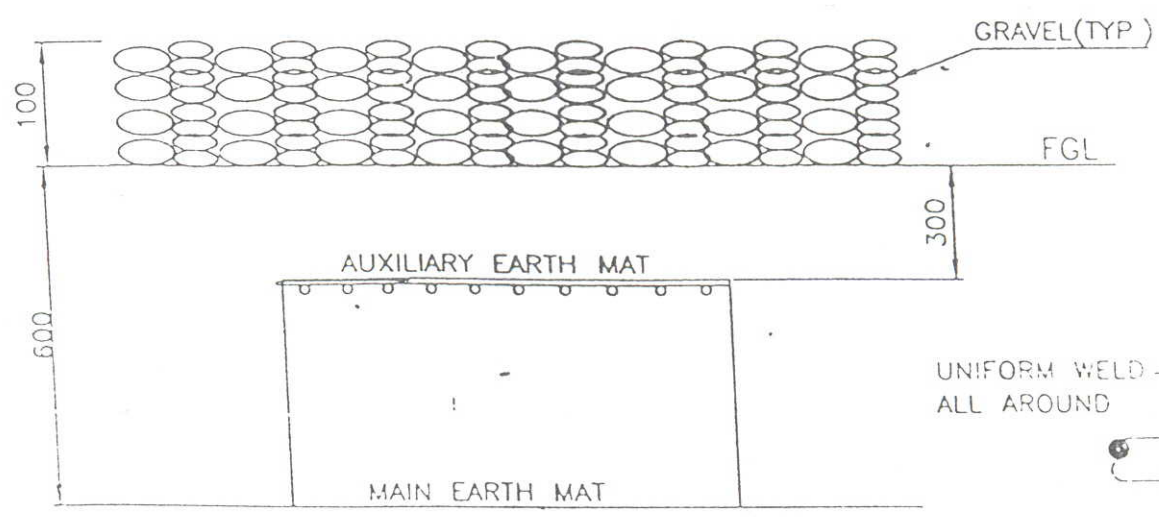
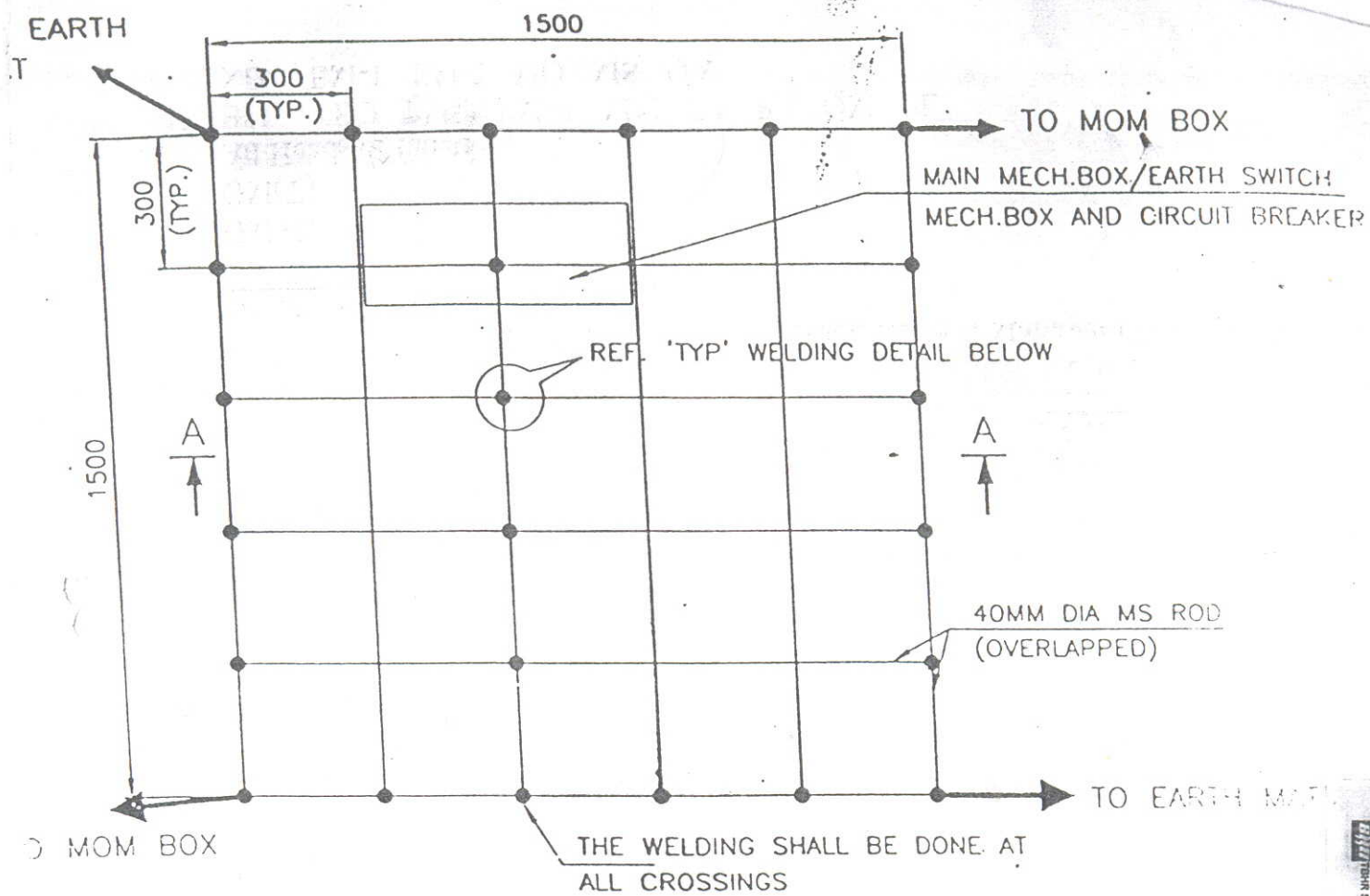
3. ROD TO STRIP



75X12 OR 50X6 GI FLAT



VIEW A-A



SECTION AA

NOTE:

AUX. EARTH MAT SHALL BE SO POSITIONED THAT THE FOOT OF THE OPERATOR ALWAYS LIE OVER THE AUX. EARTH MAT AREA WHILE ATTENDING / OPERATING THE MECH. BOX THE CABLE TRENCH ROUTING SHALL BE PLANNED ACCORDINGLY.



CC M/FU. DRC. REF.

Report No

EQUIPMENT EARTHING DETAILS

AUXILIARY EARTH MAT FOR ISOLATOR MAIN MECH. E/S
MECH. BOX & CB (TYP.)

TB-STD-316-Auxiliary Mat.

SHEET NO. 1 OF 1